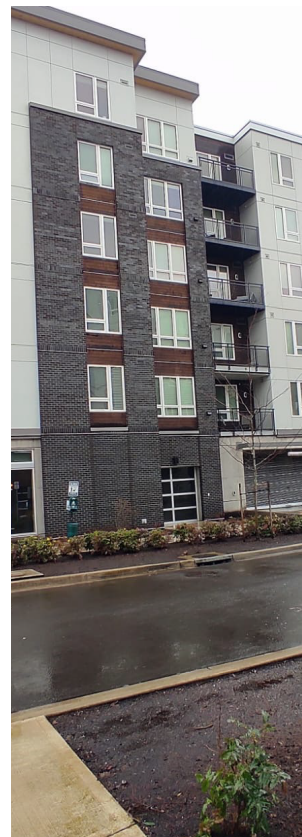


Residential Project | HILLSBORO, OR USA

## PROJECT PROFILE



### The Quarry South Siding

BAMBOO RainClad Siding 1X6

location: 1090 NE 91ST Ave, Hillsboro, OR 97006

builder: Custom Design

client: Commercial Building

product: dassoXTR Epic Cognac 1x6 Pre-primed RainClad Siding Shiplap Fused Bamboo

quantity: 1800 Sqft of RainClad Siding, Epic Cognac color

date: 2023

# dassoXTR<sup>®</sup> FUSED BAMBOO<sup>®</sup> SIDING

The dasso Group, based in Hangzhou, China, has been the world's leader in innovative bamboo products for more than two decades. With 10 manufacturing facilities, over 1,000 employees, a Design and Research Center, and over 40 patents to date, dasso's mission is in to advance the innovative use of bamboo throughout the world.

AVAILABLE IN 2 COLORS

**ESPRESSO** **COGNAC**

PATENTED: CHINA, RUSSIA, AUSTRALIA, USA, EU, MALAYSIA, SINGAPORE

## RESIDENTIAL SIDING

■ **XTR-SID18-178TG-PP**  
 ■ **EPC-SID18-178TG-PP**  
**1" x 6" T&G Rainclad Siding**  
 3/4" x 5-3/8" x 72" Pre-Primed  
 18 x 137 x 1829mm

■ **XTR-SID18-137TG-PP**  
 ■ **EPC-SID18-137TG-PP**  
**1" x 7" T&G Rainclad Siding**  
 3/4" x 5-3/8" x 72" Pre-Primed  
 18 x 137 x 1829mm

## TECHNICAL HIGHLIGHTS

- » Unsupported end-match Joint has a span rating of 100 psf.\*  
 \*Per ASTM D7032 over 16" framing
- » Class A fire rating per ASTM E84.
- » More dense than Ipe.<sup>1</sup>

## DESIGN FEATURES

- » Can stain to a variety of colors using our XTR Guard system.
- » The look and feel of a natural wood product. Performs like dense tropical hardwoods.
- » Offers the consistent quality of a manufactured composite product.

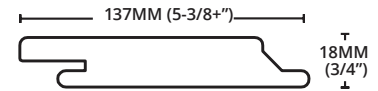
## INSTALLATION BENEFITS

- » Available pre-primed for subsequent on-site topcoating.
- » Side-grooved for hidden fastening or can be face-screwed with screws exposed or plugged using dasso.XTR plugs.
- » Decking is 6' long and end-matched for installation on the joist (on 12"/18"/24" centers) or by coverage method off the joist on 16" centers.
- » Less time, less labor, less waste and easier installation.

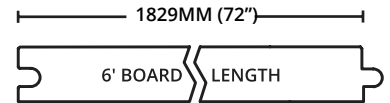
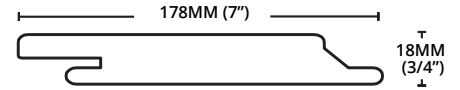
## COMPARISON CHART

SKU	dassoXTR Espresso	dassoXTR Cognac	Ipe/Brazilian Walnut	Meranti Batu	Western Red Cedar
<b>Density</b> lb/ft <sup>3</sup> (kg/m <sup>3</sup> )	69 (1,100)	75 (1,200)	66 (1,060)	53 (850)	23 (370)
<b>Strength M<sub>e</sub></b> psi(MPa)	11,922 (82)	17,730 (122)	19,173 (132)	17,259 (119)	7,498 (52)
<b>Stiffness MOE</b> 1000psi(MPa)	2,101 (14,490)	2,013 (13,880)	3,200 (22,070)	245 (16,950)	1,100 (7,584)
<b>Janka Hardnes</b> Newton(lbf)	16,992 (3,820)	17,659 (3,970)	15,620 (3,510)	7,117 (1,600)	3,110 (700)
<b>Shrinkage</b> longitude % width % thickness %	0.02 0.40 1.90	0.06 1.20 3.70	0.16 5.90 7.20	0.17 5.50 10.10	0.20 2.40 5.00

### 5-3/8" RainClad Siding with tongue & groove end-match



### 7" RainClad Siding with tongue & groove end-match



### END MATCH

All of our decking is end-matched for ease and improved quality of installation and to provide full coverage on or off the joist. Learn more at [dassoXTR.com](http://dassoXTR.com).

### 30 YEAR LIMITED WARRANTY

dasso.XTR products are manufactured using a patented process to ensure lasting outdoor beauty and enjoyment. Periodic recoating with XTR Guard is recommended to maintain its rich color. Please follow our maintenance instructions.

Visit [dassoXTR.com](http://dassoXTR.com) for copies of our installation and maintenance instructions and warranties.